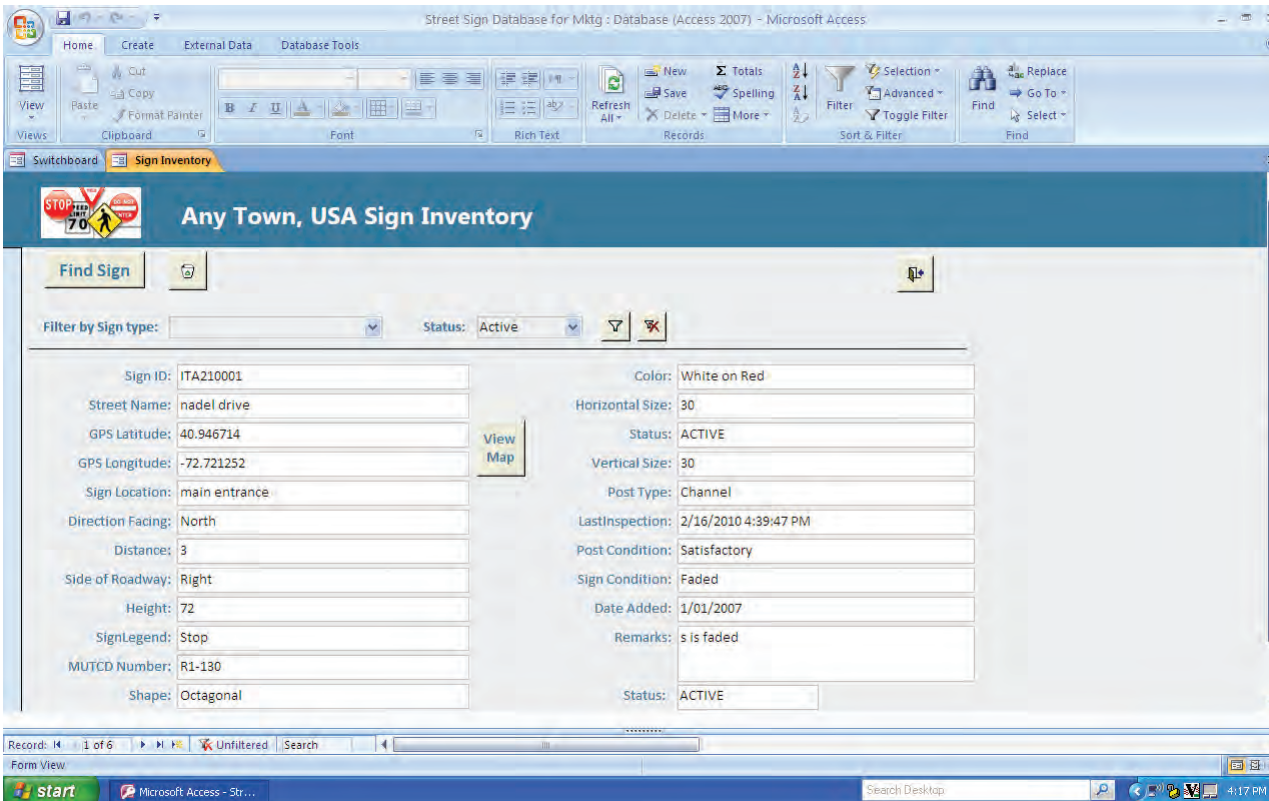




SIGN TRACKER



Sign Tracker from ERS Data Solutions Group automates the process of inspecting, inventorying, locating, and maintaining street signs. Producing accurate reports of existing assets to qualify for funds.



Rugged Mobile computer with bar code scanner, WiFi, cellular, Blue Tooth and GPS

In December 2007, the final rule was published in the Federal Register making the sign retro-reflectivity requirements a federal regulation effective January 2008.

The rule imposes a minimum level of retro-reflectivity for certain traffic signs.

The Mobility Advantage:
Reduce cost, generate revenue and increase operational efficiency for State and Local Agencies with mobile computing from ERS Data Solutions Group.

Easily integrate with existing ODBC database, spread sheet, or GIS inventory application



KEY BENEFITS

- Automated collection of sign inventory reduces errors, redundant data entry, and paper based data collection
- Barcode based tracking enables serialized identification, and scanning reduces errors
- With onboard GPS and GIS Mapping software, easily record asset location relative to intersections and land marks
- Create reports by date range, location, asset type etc., with real-time information
- Extend Asset life span with more frequent and efficient inspections and preventative maintenance
- Compliance with Federal Highway Administration Sign Reflectivity Reporting Requirements



SIGN TRACKER



Features of Sign Tracker:

- By assigning a static serial number to each sign via bar coded labels, operators can easily identify individual signs and their mounting structures.
- Rugged mobile computers with bar code scanners eliminate paper based data collection in the field, eliminating costly errors and time consuming redundancy.
- Integrated color digital camera allows image capture without the need for a separate camera and automatically attaches image files to inventory reports.
- Available cellular activation allows for real time data transfer and voice communication.
- Step by step drop down screens ensure that all required data is collected in the field, leaving operators to focus on the inspection and maintenance process.
- Capturing GPS coordinates allows Superintendants to plot sign locations on GIS mapping systems with pin point accuracy.
- Easily synchronize mobile data with PC based host systems including stand alone spread sheets and databases, or existing asset management and GIS systems.

System Requirements:

Windows 98/NT/2000/XP/Vista, 20 MB free disk space, ActiveSync version 3.5 or higher (98/NT/2000/XP), Windows Mobile Device Center (Vista).

Required for Deployment: A Mobile Device running Windows Mobile, CE, CE.Net, or Pocket PC, Trial or registered version of TracerPlus 6.0.

For More Information Contact: **ERS DATA SOLUTIONS GROUP**
info@ersdatasolutions.com
 800-475-3320 ask for Inside Sales



ERS is a wireless technology company that focuses on Wireless Voice, Video and Data for Government, Health Care, Education, and Enterprise.

ERS Data Solutions Group
 4515 S. High School Road
 Indianapolis, IN 46241
 800-475-3320
www.ersdatasolutions.com

